

# Hospital Discharge

## Wellbeing Impact Assessment Report

This report summarises the likely impact of a proposal on the social, economic, environmental and cultural well-being of Denbighshire, Wales and the world.

Assessment Number:	146
Brief description:	Support from health and social care community services to support timely discharge
Date Completed:	03/01/2017 10:57:11 Version: 1
Completed By:	Cathy Curtis-Nelson
Responsible Service:	Community Support Services
Localities affected by the proposal:	Whole County,

# IMPACT ASSESSMENT SUMMARY AND CONCLUSION

Before we look in detail at the contribution and impact of the proposal, it is important to consider how the proposal is applying the sustainable development principle. This means that we must act "in a manner which seeks to ensure that the needs of the present are met without compromising the ability of future generations to meet their own needs."

## Score for the sustainability of the approach

Could you do more to make your approach more sustainable?

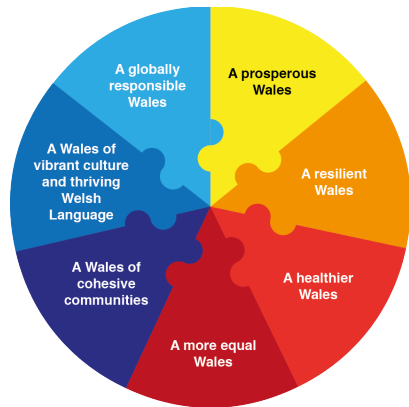
(2 out of 4 stars)



Actual score: 13/ 24.

## Summary of impact

Wellbeing Goals



A prosperous Denbighshire	Neutral
A resilient Denbighshire	Neutral
A healthier Denbighshire	Positive
A more equal Denbighshire	Positive
A Denbighshire of cohesive communities	Positive
A Denbighshire of vibrant culture and thriving Welsh language	Neutral
A globally responsible Denbighshire	Positive

## Main conclusions

All activities described in the report about hospital discharge are aimed at ensuring people do not remain in hospital longer than is absolutely necessary. This means ensuring we have a robust social care workforce and excellent communication systems between health and social care. It also means that we need to invest in preventative approaches and initiatives that prevent people going into hospital away from their families when it is not necessary. Resilient health communities are what we are aiming for.

# THE LIKELY IMPACT ON DENBIGHSHIRE, WALES AND THE WORLD

## A prosperous Denbighshire

Overall Impact:	Neutral
Justification for Impact:	The developments are small

### **Positive consequences identified:**

It is essential that more health and social care staff are trained and recruited and feel they have an important role to play

A skills-based approach is appropriate

Communication between health and social care staff is essential.

### **Unintended negative consequences identified:**

### **Mitigating actions:**

## A resilient Denbighshire

Overall Impact:	Neutral
Justification for Impact:	

### **Positive consequences identified:**

CESI already have an excellent recycling rate for community equipment

### **Unintended negative consequences identified:**

### **Mitigating actions:**

## A healthier Denbighshire

Overall Impact:	Positive
Justification for Impact:	More investment in community health services will reduce pressure on hospital beds

### **Positive consequences identified:**

Maintaining people at home safely and independently with the help of health and social care community services is the core of the report

Part of the prevention work relates to participation and involvement in local communities e.g. the Community Navigators and Talking Points

It has been recognised that a closer relationship with mental health services is necessary at one end of the scale and the importance of the 3rd Sector Coordinator and the provision of information for wellbeing is essential at the other

It has been recognised that the capacity in community health services is poor

### **Unintended negative consequences identified:**

### **Mitigating actions:**

## A more equal Denbighshire

Overall Impact:	Positive
Justification for Impact:	Better access to health and social care for older people

### **Positive consequences identified:**

The majority of people in hospital are older people and any improvement in services in the community to help them maintain their independence and safety will be positive

### **Unintended negative consequences identified:**

### **Mitigating actions:**

## A Denbighshire of cohesive communities

Overall Impact:	Positive
Justification for Impact:	People should not be in hospital unless absolutely necessary.

### **Positive consequences identified:**

Being in hospital when it is avoidable increases the risks of infection and dependency creation. Timely hospital discharge is essential

Encouraging responsibility to manage on health and well-being is an approach used.

### **Unintended negative consequences identified:**

### **Mitigating actions:**

## A Denbighshire of vibrant culture and thriving Welsh language

Overall Impact:	Neutral
Justification for Impact:	It is difficult to recruit staff across health and social care now and therefore employing a higher ratio of welsh language speakers is not always possible

### **Positive consequences identified:**

All services aspire to the Welsh language standards

### **Unintended negative consequences identified:**

### **Mitigating actions:**



## A globally responsible Denbighshire

Overall Impact:	Positive
Justification for Impact:	Better processes and responses from social care mean people can be discharged in a timely manner

### **Positive consequences identified:**

Right to a family life (by not being in hospital)  
Social care adjusts practice to support the objectives of BCU

### **Unintended negative consequences identified:**

### **Mitigating actions:**